

**KOLKATA PORT TRUST**  
**HALDIA DOCK COMPLEX**

**Tender No.: SDM (P&E) / T20 / 2018-19**  
**[E-Tender No. KoPT/Haldia Dock Complex/P&E Div/22/18-19/ET/317]**

**E-Tenders, under single cover system [ Pre-qualification, Techno-commercial terms and Price under single cover] for "Manufacturing, supply, delivery and site trail run of Charger Beetle complete assembly along with delivery of spares as per BOQ at Haldia Dock Complex, KOLKATA PORT TRUST".**

**♠ *ADDENDUM-I* ♠**

**CORRECTIONS / ADDITIONS / DELETIONS, ETC.**

**[Total Number of Pages: 02(Two)]**

**NOTE:**

1. This "Addendum-I" should be read in conjunction with this office above Tender Document.
2. Consequential changes, arising out of this Addendum-I, will be deemed to have been effected, even if the same were not incorporated specifically in the Tender Document.
3. One set of this "Addendum-I" along with copy of Drawings, shall have to be submitted along with the Offer, with each page of it, duly signed and stamped, as token of acceptance.
4. All other terms and conditions of this office above Tender Document will remain unchanged.

## HALDIA DOCK COMPLEX

### ♠ **ADDENDUM-I** ♠

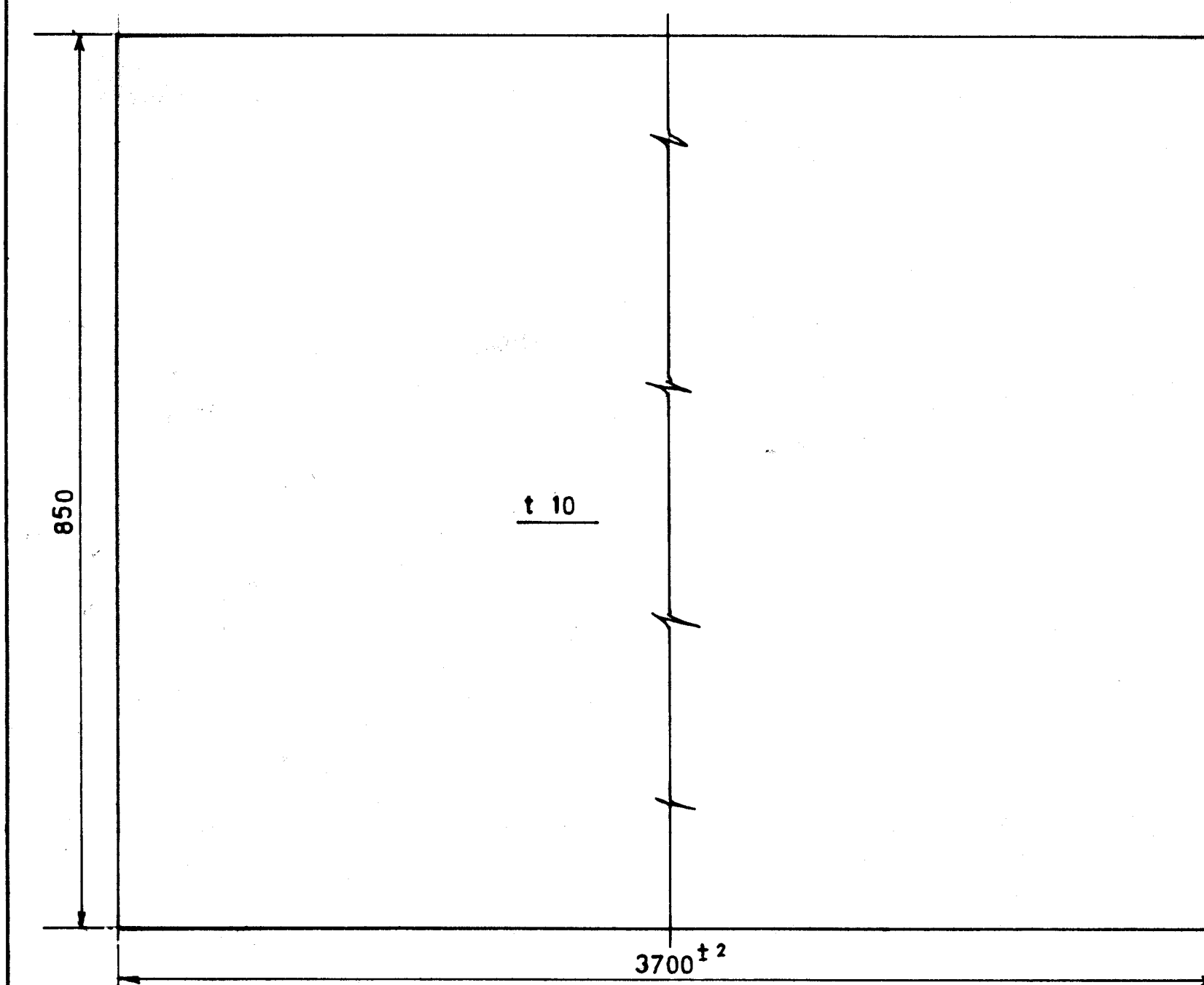
Tender No.: SDM (P&E) / T20 / 2018-19

#### Terms and conditions

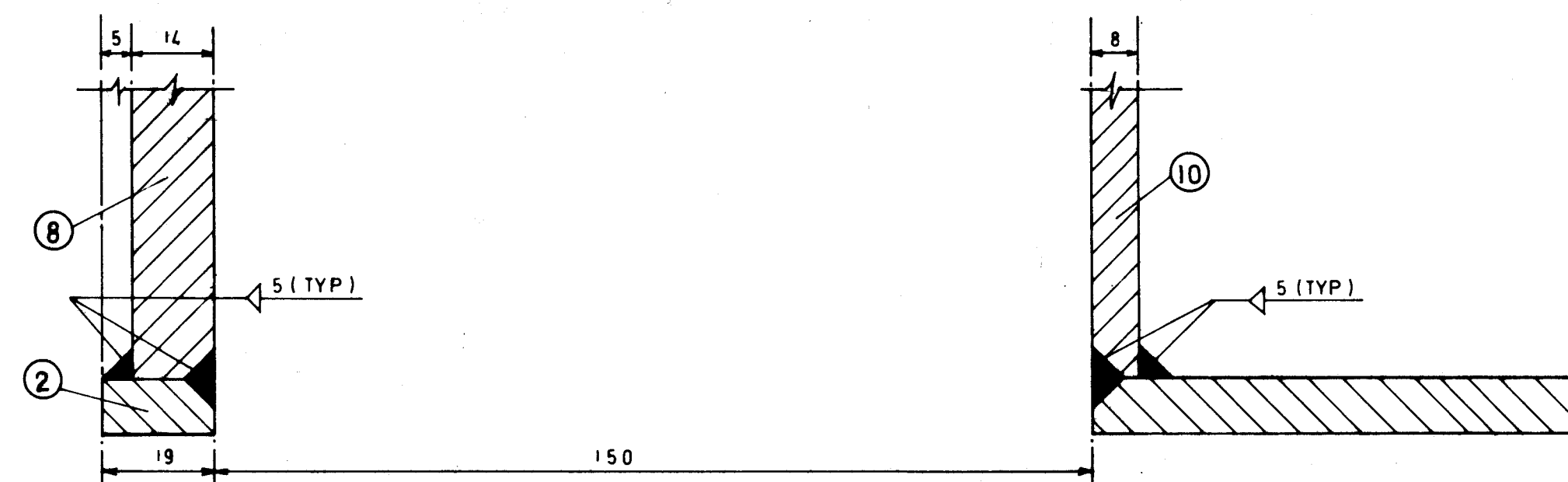
Sl. No.	Clause No./ Ref. No.	Para /Line No.	As specified in the Tender Document	To be read as / Remarks
1.	Clause 6.4(Annexure-D) Available Drawings	Page-32-33	-	Uploading of Drawing No. 210-119 R1( 1 sheet) Socket Holder.
			-	Uploading of Drawing No. 210-010 R1(2 Sheets) Bottom Plate Assy. of Body (I+II) – Sheet 1 of 2 & Detail of Bottom Plate of Body (I+II) – Sheet 2 of 2.
			-	Uploading of Drawing No. 210-122 ( 2 Sheets) .Top Plate Assembly of Body I & II(Sheet 1 of 2) & Detail of Top Plate Assembly of Body I & II(Sheet 2 of 2) for wagon Charging Device.



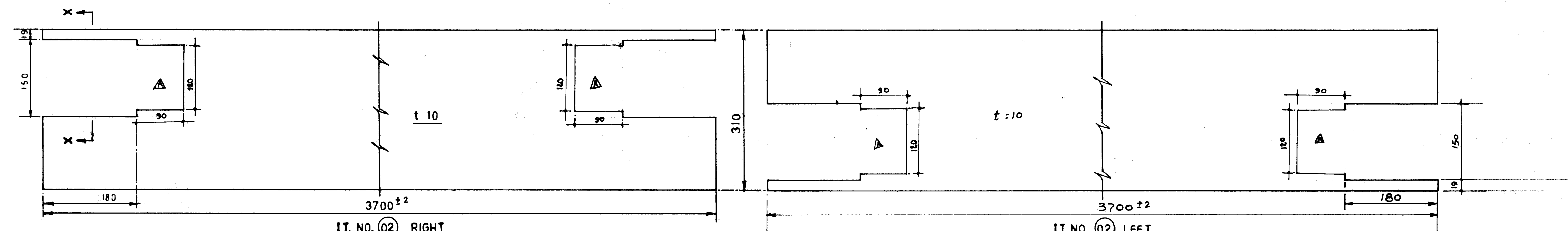
ALL DIMENSIONS ARE IN mm, UNLESS OTHERWISE STATED.



IT. NO. (01)  
WT=246.88 KG. (approx.)

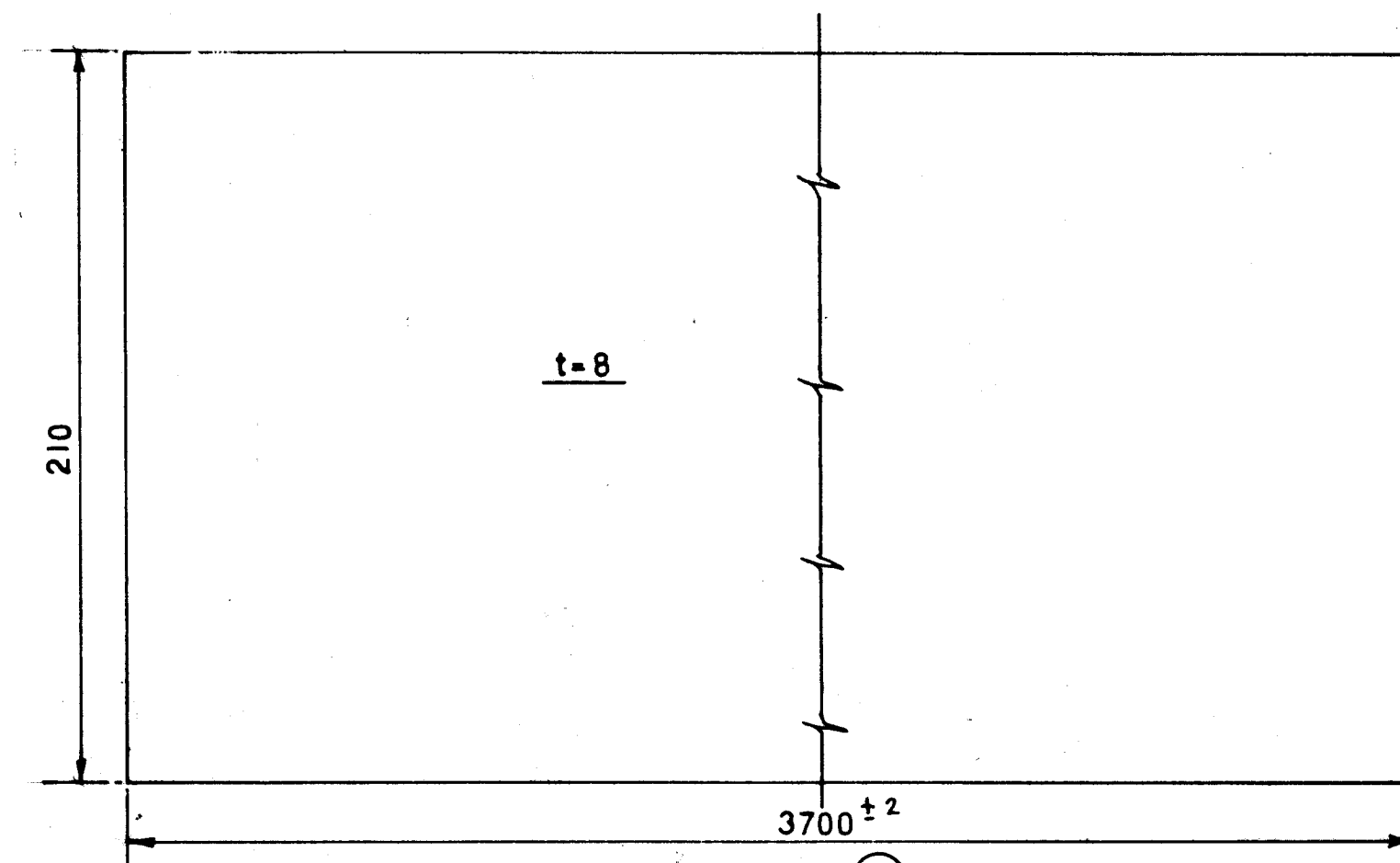


SEC. X-X SHOWN THE WELDING BETWEEN IT. NO. 2, 8 & 10.

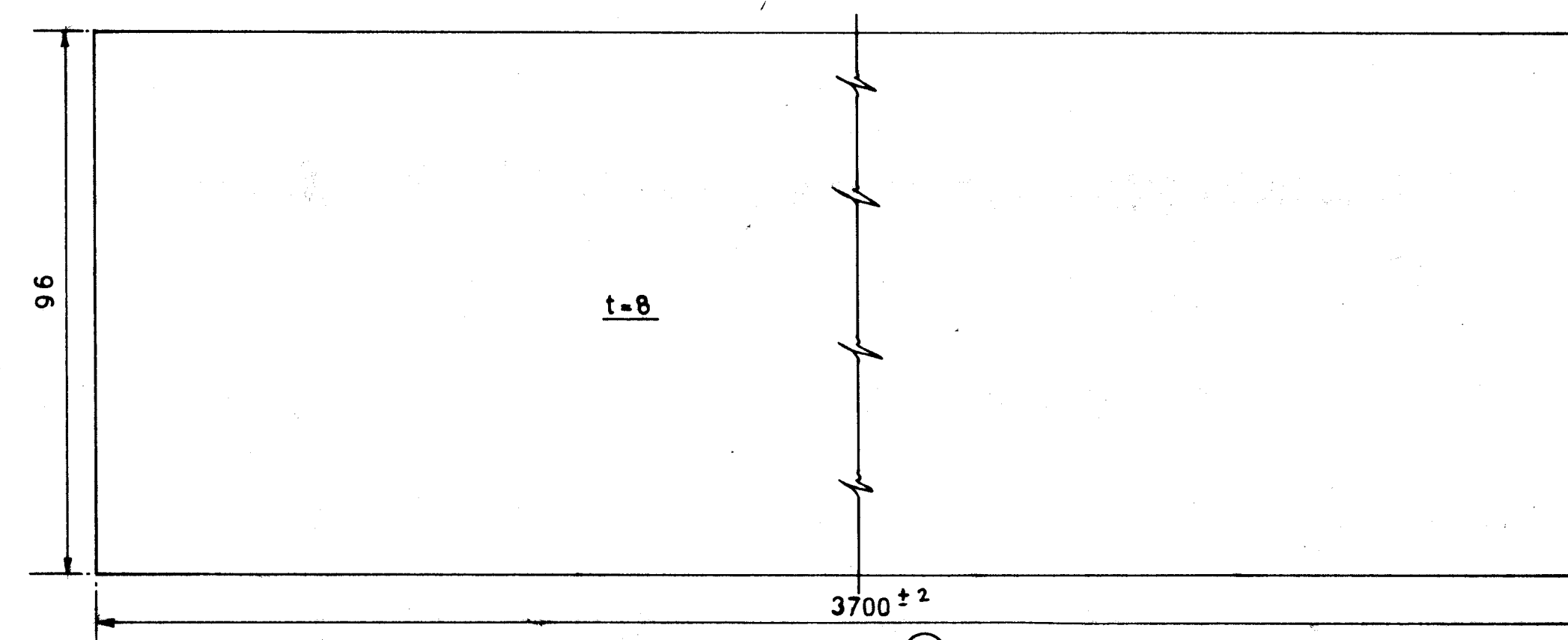


IT. NO. (02) RIGHT  
WT=180.06 (approx.)

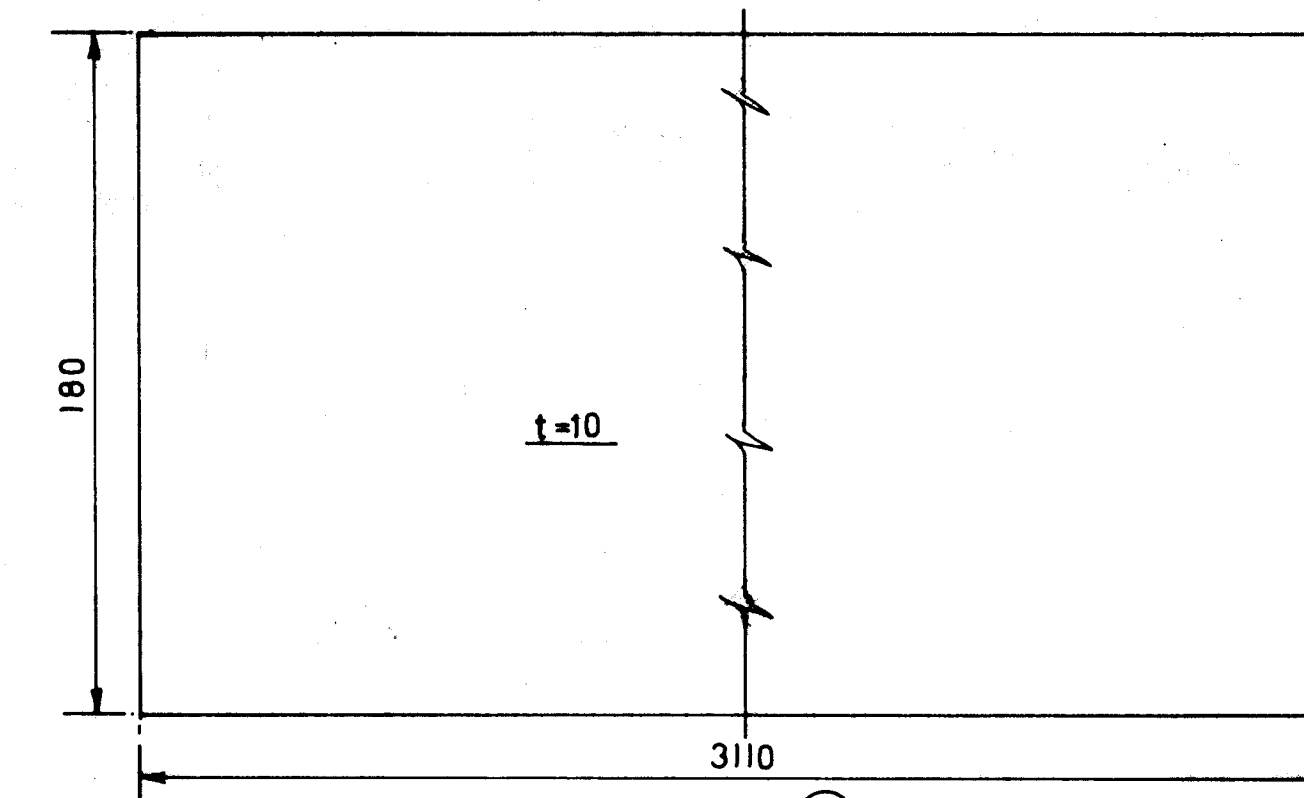
IT. NO. (02) LEFT



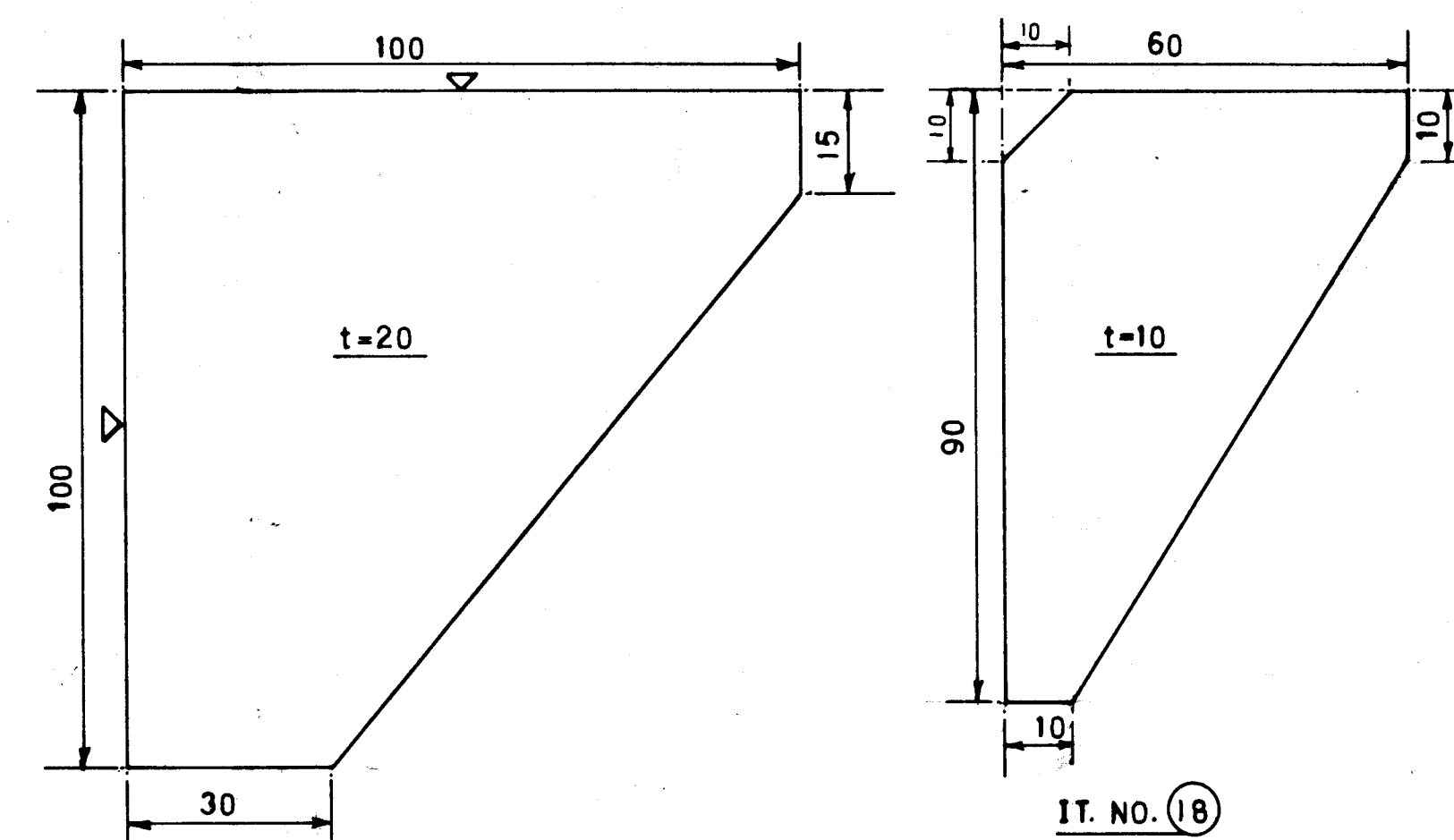
IT. NO. (06)  
WT=48.79 KG. (approx.)



IT. NO. (07)  
WT=22.30 KG. (approx.)

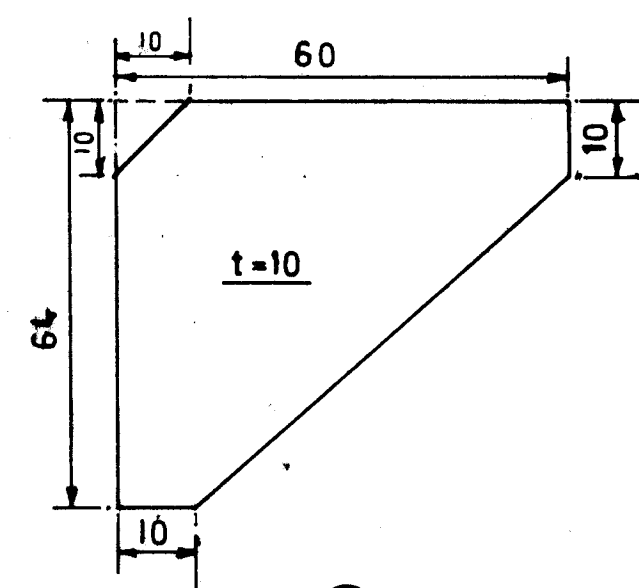


IT. NO. (11)  
WT=43.94 KG. (approx.)

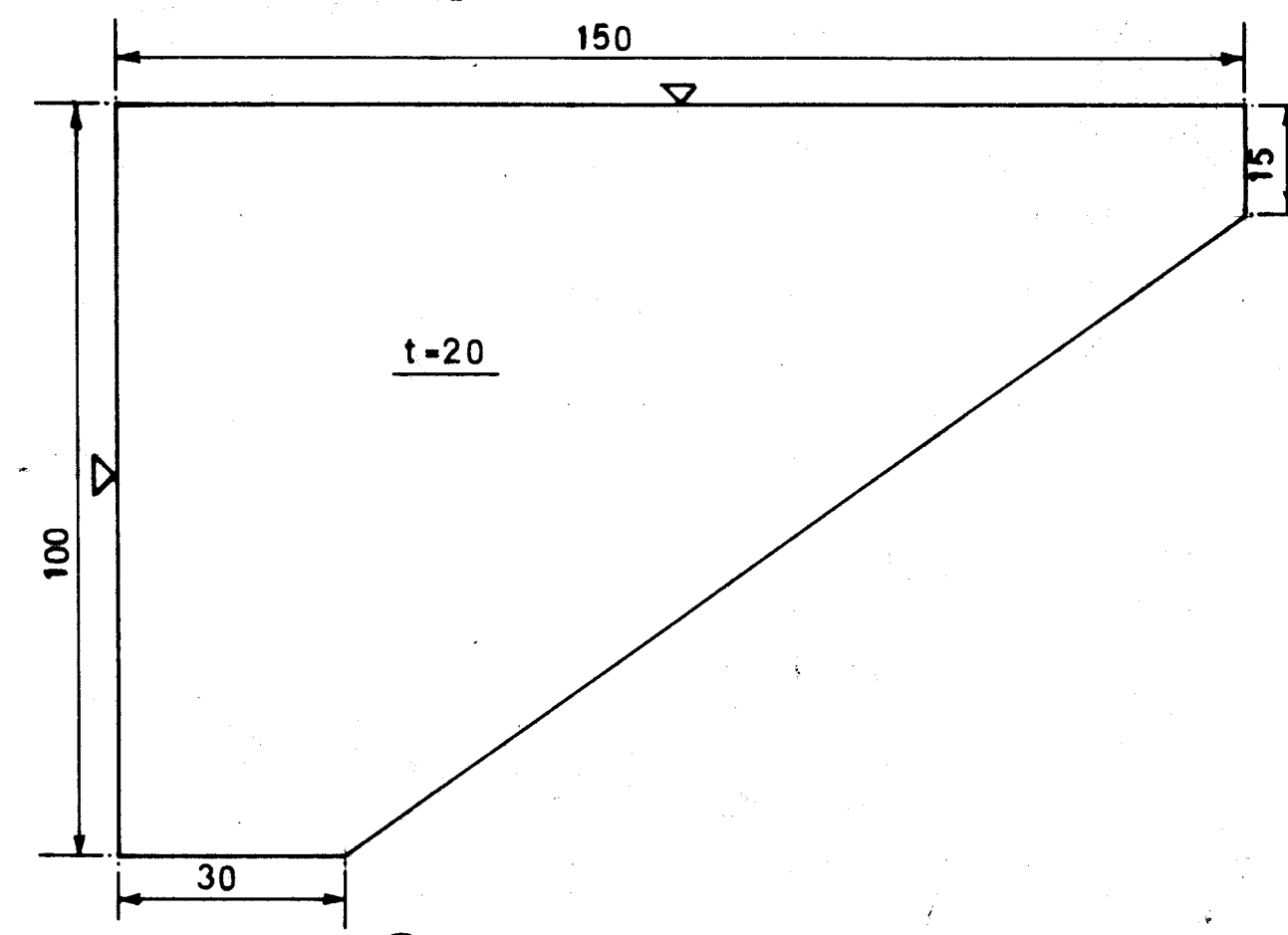


IT. NO. (17)  
WT=1103 KG. (approx.)

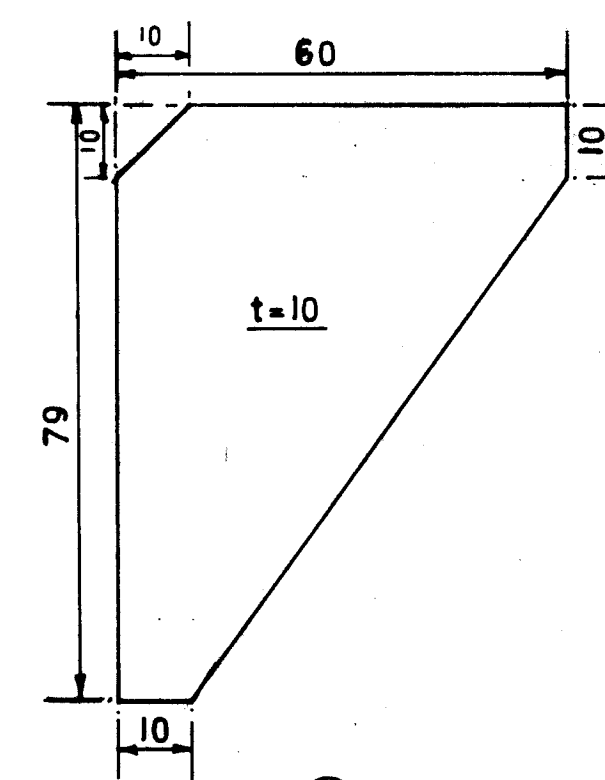
IT. NO. (18)  
WT=0.313 KG. (approx.)



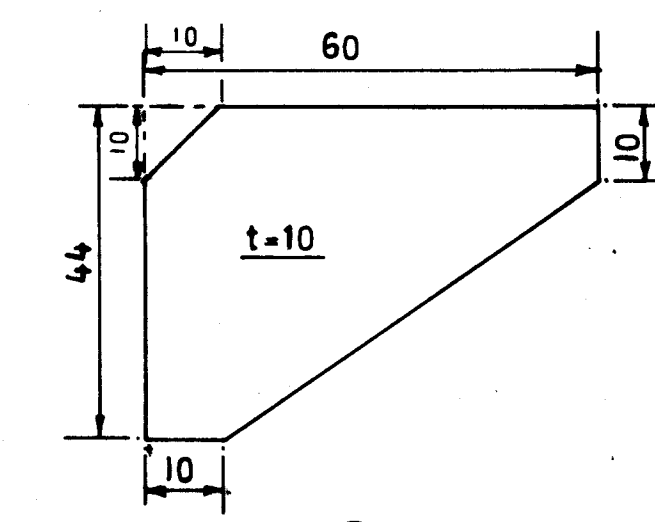
IT. NO. (19)  
WT=0.195 KG. (approx.)



IT. NO. (16)  
WT. 1.55 KG. (approx.)



IT. NO. (20)  
WT. 0.235 KG. (approx.)



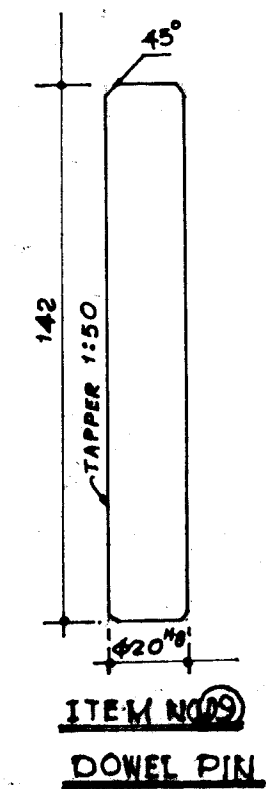
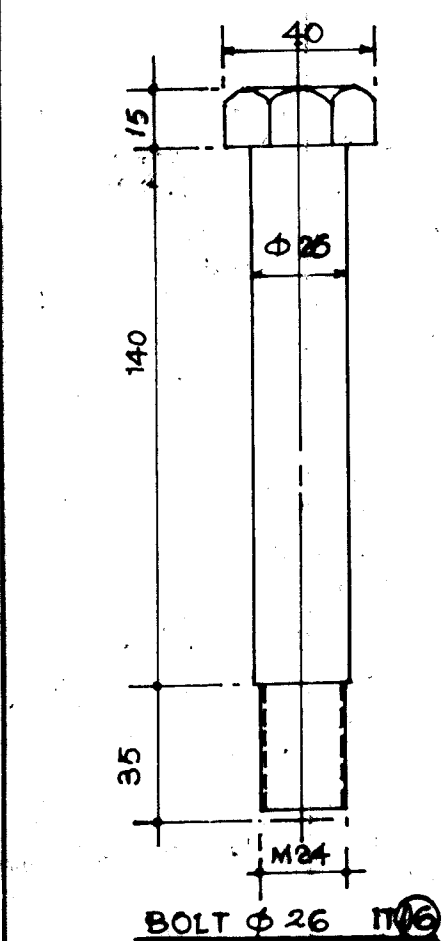
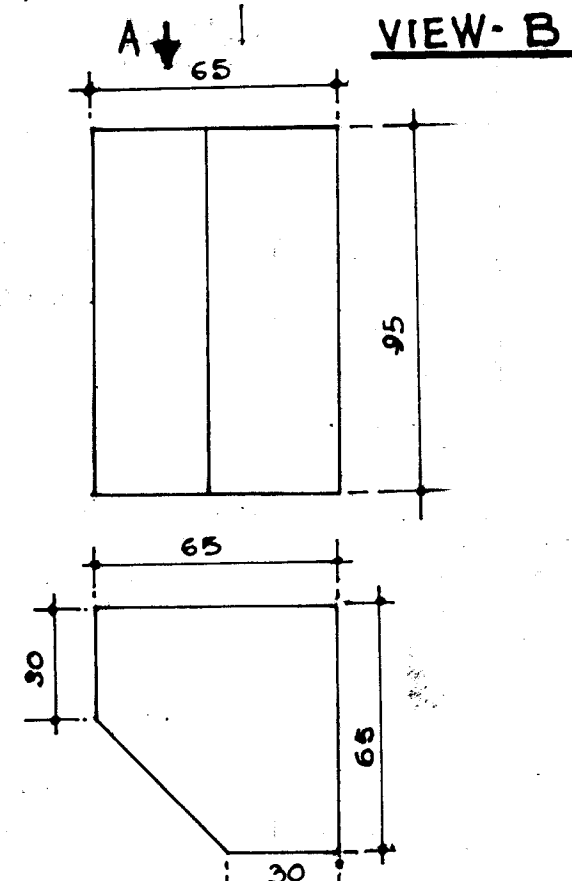
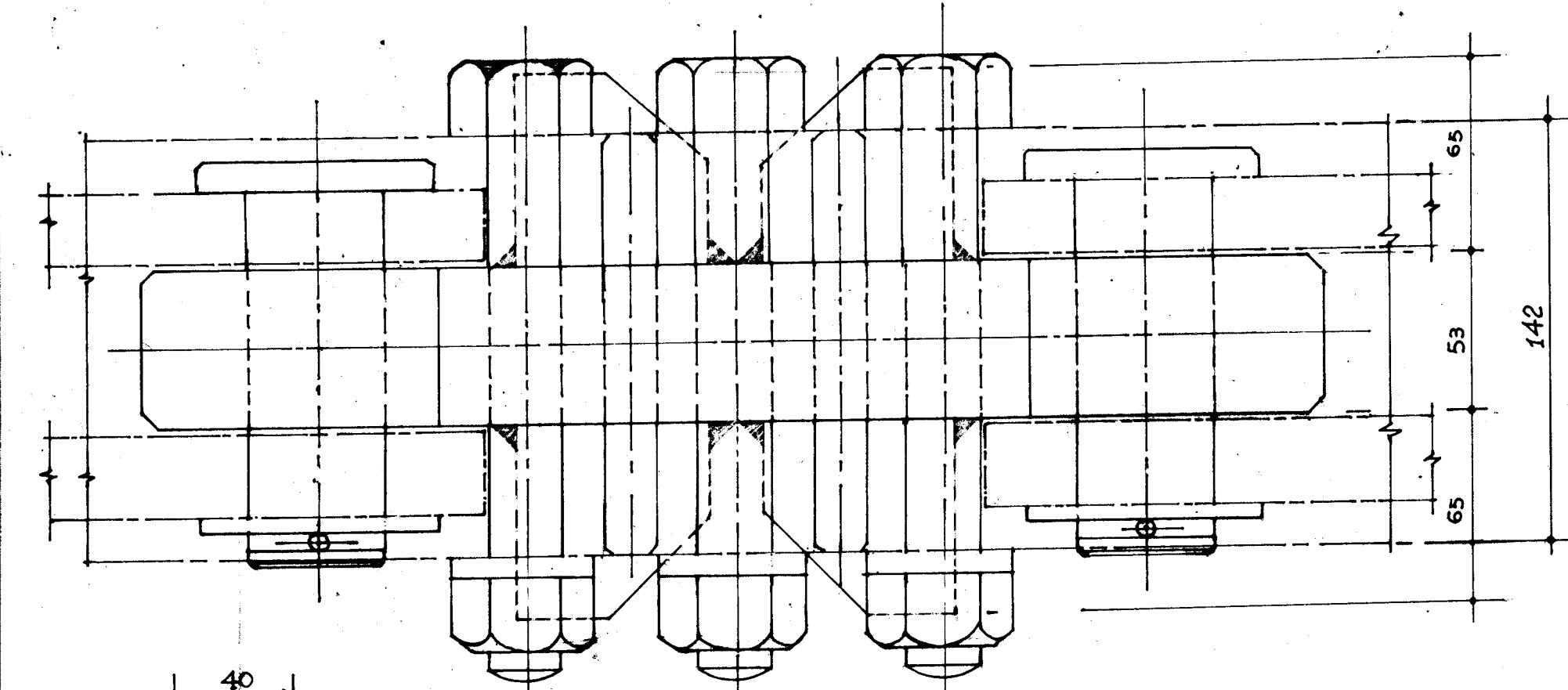
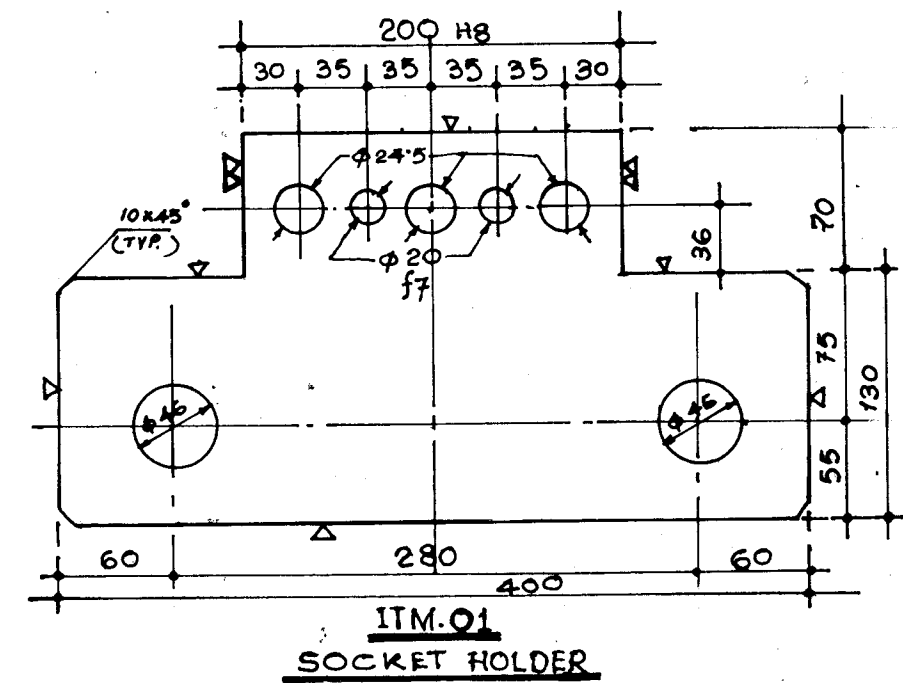
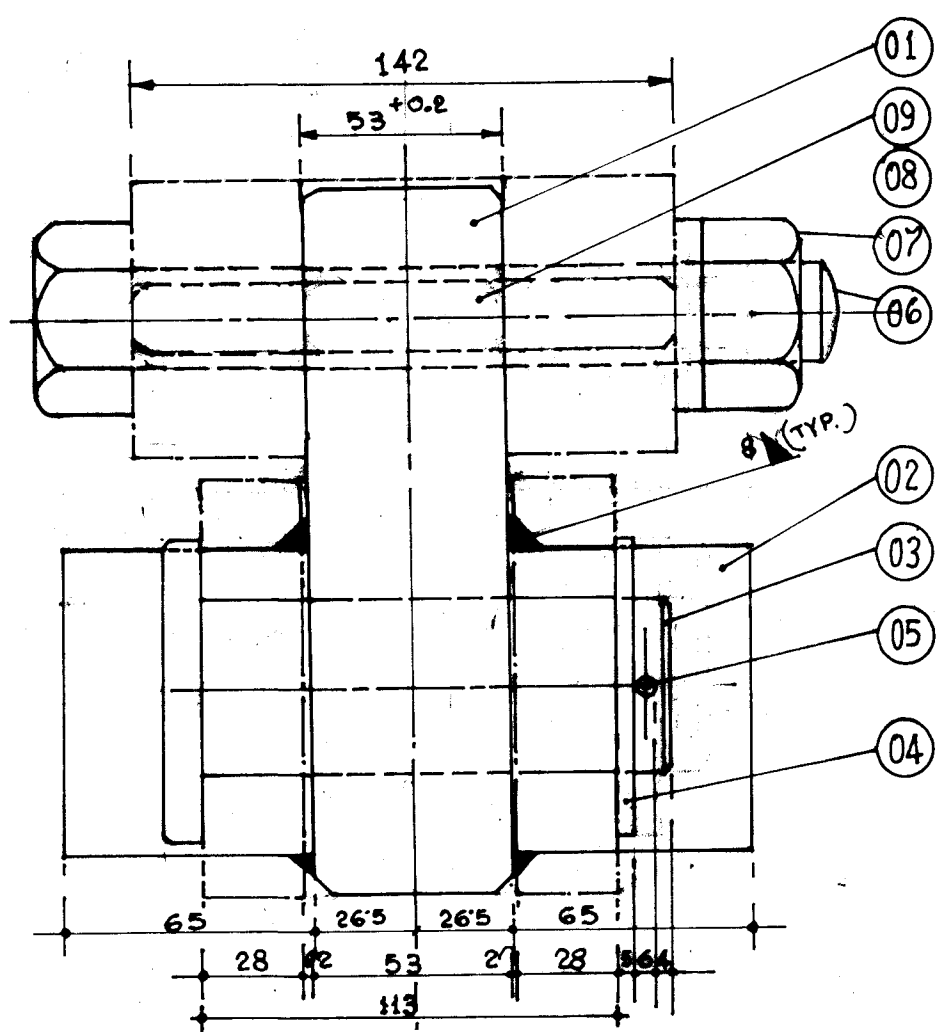
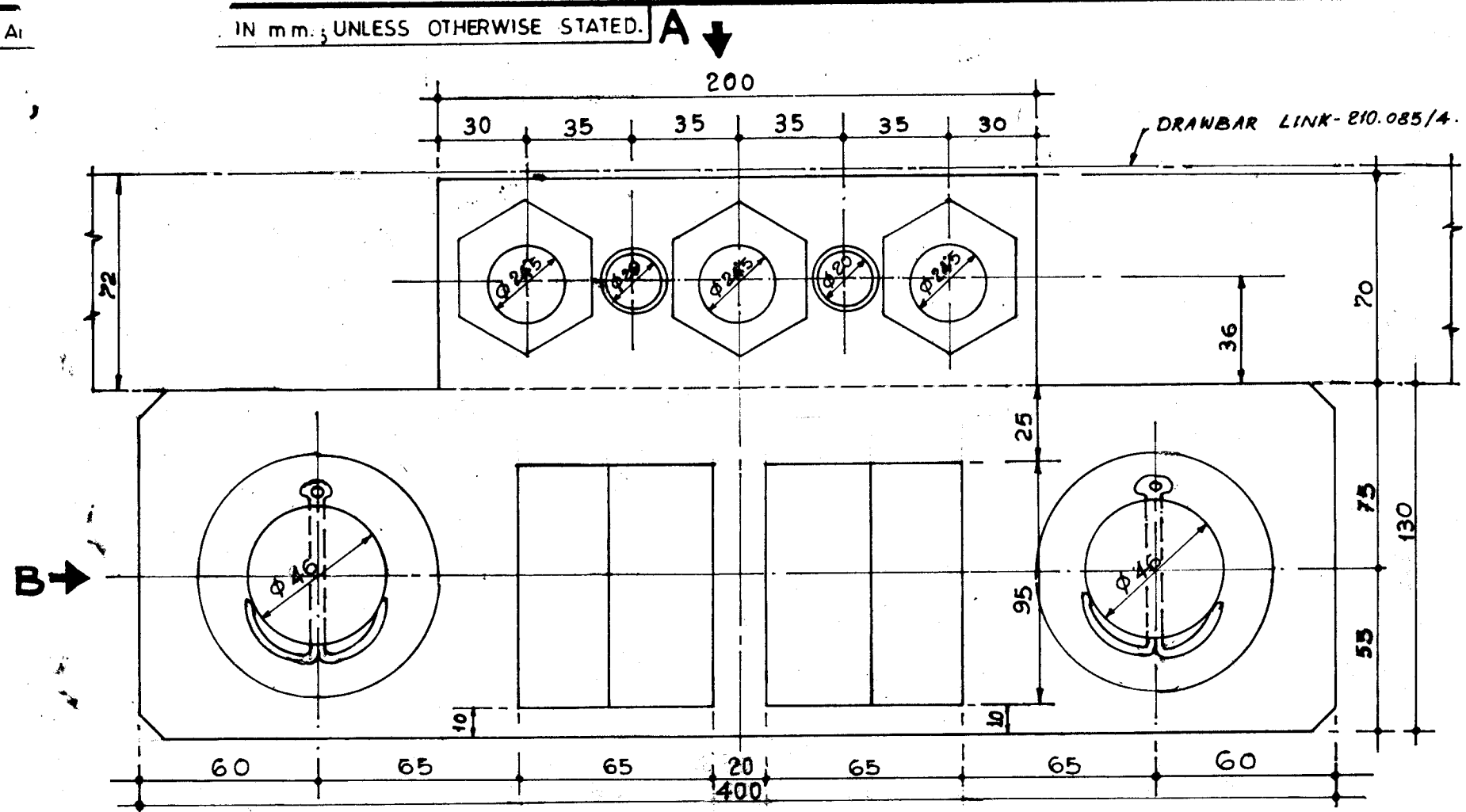
IT. NO. (21)  
WT. 0.134 KG. (approx.)

FOR TENDER PURPOSE ONLY

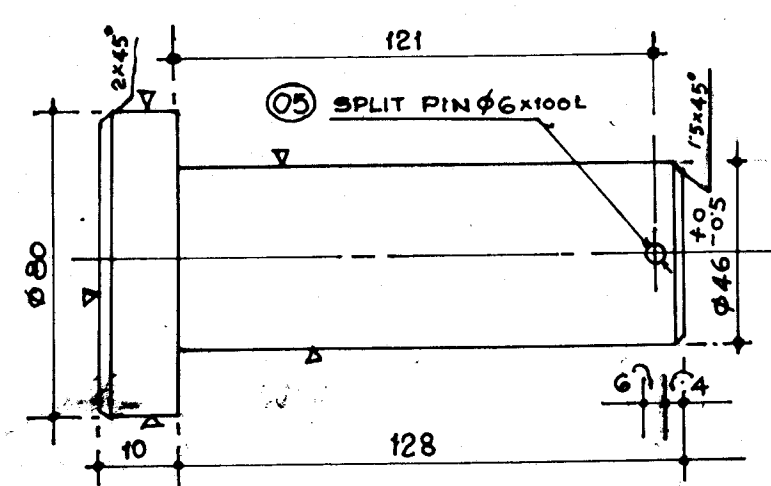
CORRECTION DONE ON 29.01.02

KOLKATA PORT TRUST	NAME DT
HALDIA DOCK COMPLEX	DGN —
M(P & E)'S DRG. OFFICE	DRN —
DETAIL OF BOTTOM PLATE	TGD —
OF BODY I & II.	CKD: 9/1/02
FOR WAGON CHARGING DEVICE.	APVD: 21/1/02
SCALE: 1:1, 1:2 & 1:5	WT. 1.55 KG.
DRG. NO. 210-010R	SH. 2 OF 2.

IN mm, UNLESS OTHERWISE STATED.



VIEW-A



PIN ITM. 03

STOPPER-ITM. 02  
VIEW-A

FOR TENDER PURPOSE ONLY

TOTAL WT. = 37.49 kg. (WITH OUT THE  
WT. OF IT. NO. 05, 06, 07 & 08)

09	DOWEL PIN $\phi$ 20 XL 142	2	42.04 kg	0.35 x 2 = 0.7
08	SPRING WASHER $\phi$ 24	3	0.05 kg	
07	NUT $\phi$ 24	3	0.05 kg	
06	BOLT $\phi$ 24 XL 175	3	0.05 kg	
05	SPLIT PIN $\phi$ 6 XL 100	2	0.05 kg	
04	WASHER $\phi$ 24 x 5	2	0.05 kg	0.065 x 2 = 0.13
03	PIN (HARDNESS-270-275 BHN)	2	0.05 kg	2.06 x 2 = 4.12
02	STOPPER	4	0.05 kg	0.48 x 4 = 1.92
01	SOCKET HOLDER	1	0.05 kg	
ITEM NO.	DESCRIPTION	QTY.	MATL.	WT. IN kg

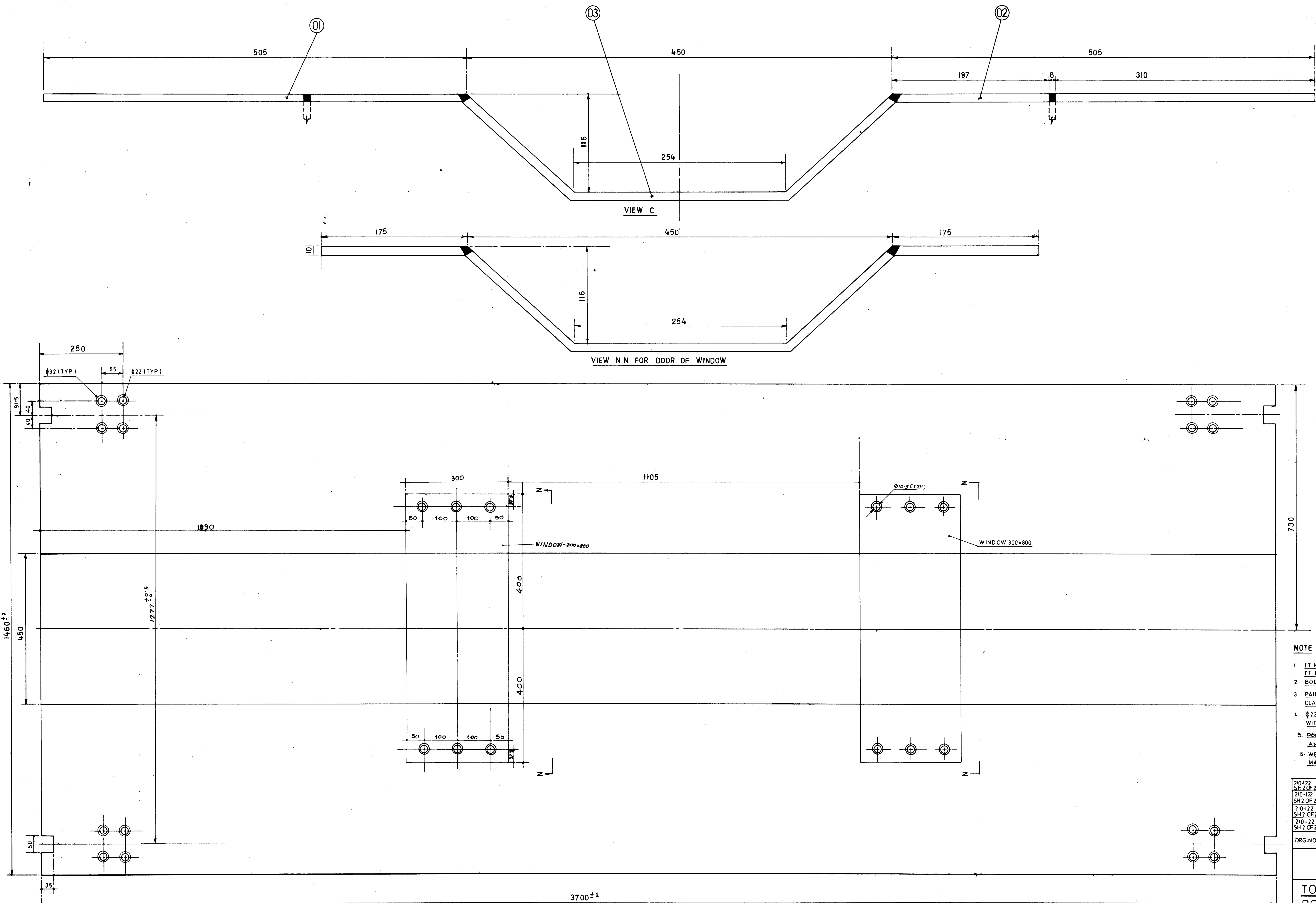
KOLKATA PORT TRUST  
HALDIA DOCK COMPLEX  
M/P&E'S DRG. OFFICE

SOCKET HOLDER  
ASSLY FOR C. BEETLE  
FOR DRAW BAR LINK OF 1

WT. IN kg. DRG. NO. 210.119 R1



ALL DIMENSIONS ARE IN mm, UNLESS OTHERWISE STATED.



NOTE

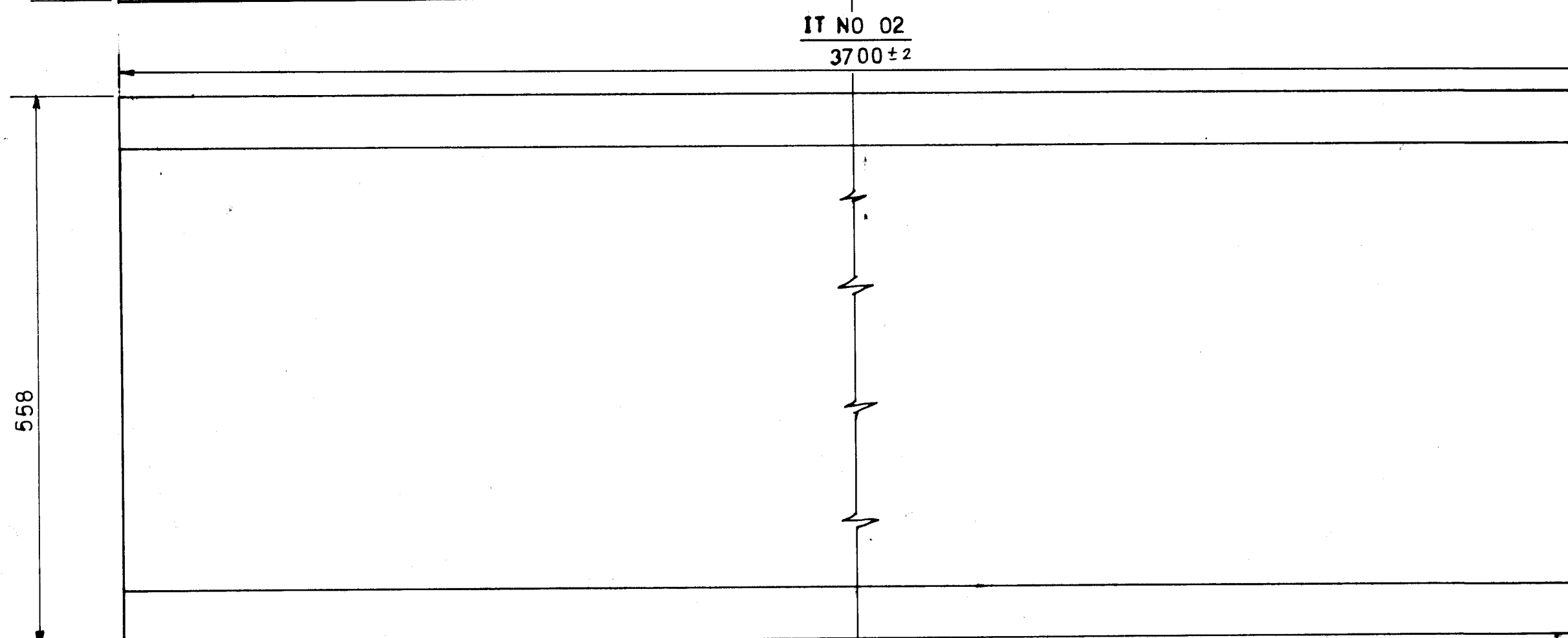
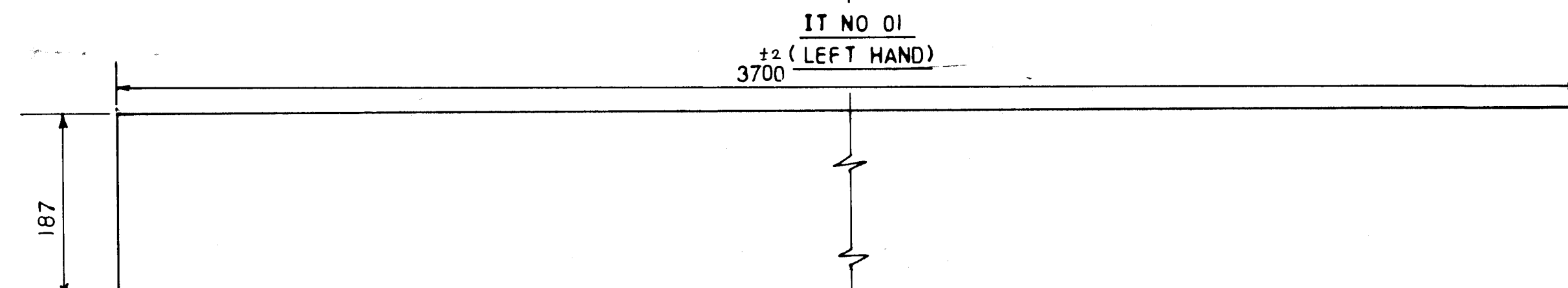
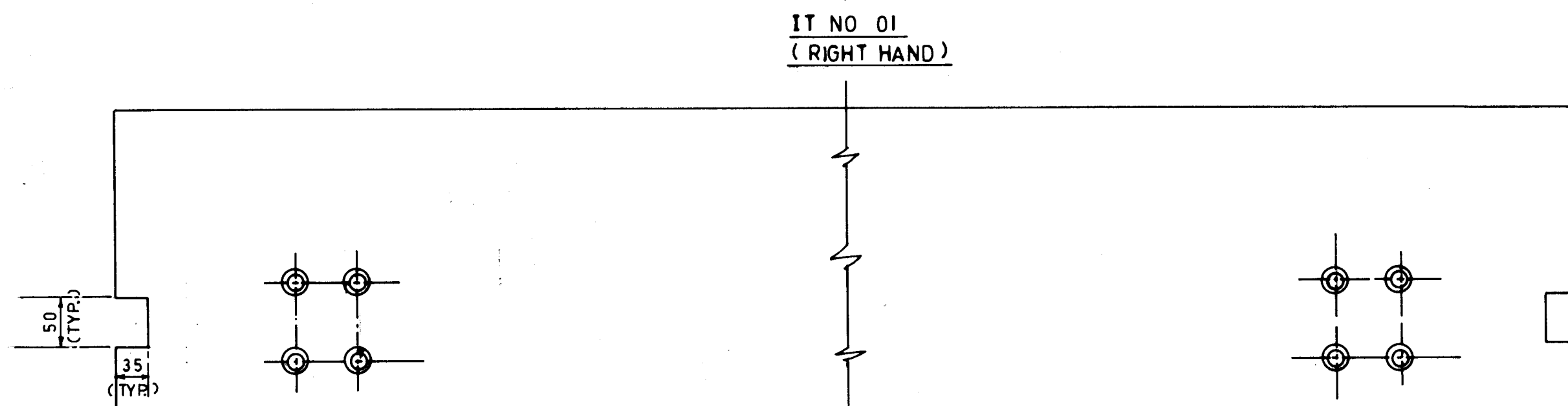
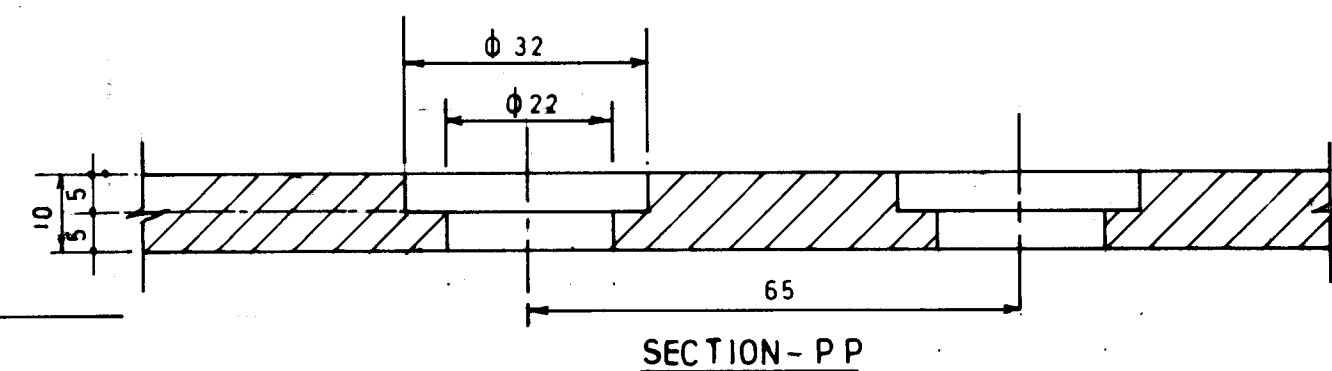
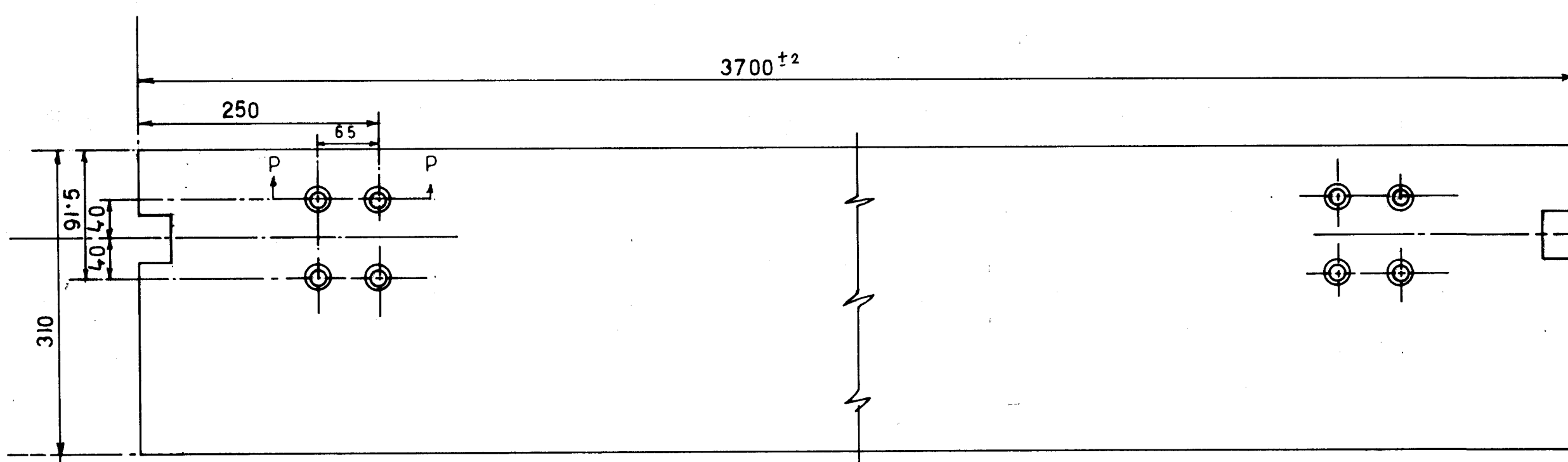
1. IT. NO. 1 & 2 TO BE WELDED IN FULL LENGTH WITH IT. NO. 6 OF DRG. NO. 210-010. R1 SHI OF 2.
2. BODY MUST BE STRAIGHT IN ALL RESPECT AFTER FABRICATION.
3. PAINTING OF THE BODY TO BE DONE AS PER PAINTING CLAUSE GIVEN IN TENDER DOCUMENT.
4. Ø22 HOLES IN IT. NO. 1 TO BE DRILLED IN EXACT MATCHING WITH THE BOTTOM PLATE ASSEMBLY.
5. DOOR FOR WINDOW TO CUT FROM THE TOP PLATE AND USED AS THE DOOR.
6. WELDING JOINT OF THE TOP PLATE TO BE GRIND TO MAKE SMOOTH BEFORE PAINTING.

DRG. NO.	SL. NO.	DESCRIPTION	QTY.	MATL.	UNIT	TOTAL
210-122	04	Ø10x20L CSK SCREW	12	SS		
210-122	03	PLATE 558x10x3700	1	IS 2062-94	162-07	162-07
210-122	02	PLATE 187x10x3700	2	IS 2062-94	54-31	108-62
210-122	01	PLATE 310x10x3700	2	IS 2062-94	90-03	180-06
DRG. NO.	SL. NO.	DESCRIPTION	QTY.	MATL.	UNIT	TOTAL
		KOLKATA PORT TRUST			NAME	DT.
		HALDIA DOCK COMPLEX			DGN	
		MCP & E'S DRG. OFFICE			DRN	
		TOP PLATE ASSEMBLY OF			TCO	
		BODY I & II.			CKD	
		FOR WAGON CHARGING DEVICE			APVD	
					WT. IN KG.	
					450.75	

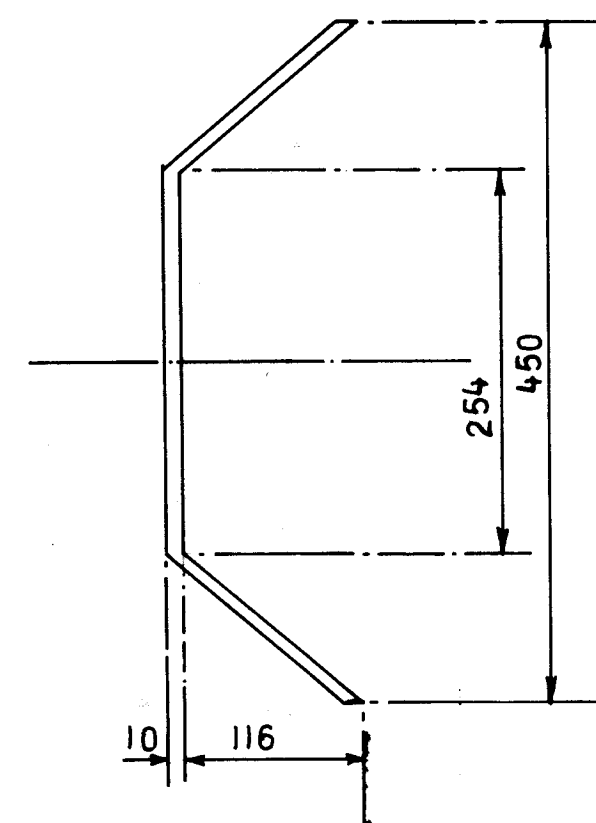
FOR TENDER PURPOSE ONLY

SCALE:-1:2 & 1:5 DRG. NO.210-122

ALL DIMENSIONS ARE IN mm, UNLESS OTHERWISE STATED.



DEVELOPED WIDTH OF PLATE 558mm



FOR TENDER PURPOSE ONLY

KOLKATA PORT TRUST HALDIA DOCK COMPLEX M P & E'S DRG. OFFICE	NAME:	DT
	BGN	—
	DRN	24.02.02
	TCD	—
DETAIL OF TOP PLATE		CKD: 9.1.12
ASSEMBLY OF BODY I & II		APVD: 12.1.12
FOR WAGON CHARGING DEVICE.		WT. IN KG 450.750
SCALE 1:1 & 1:5		DRG. NO 210.122 SH 2 OF 2